

# BlueLite X1 CD Tracker Sample

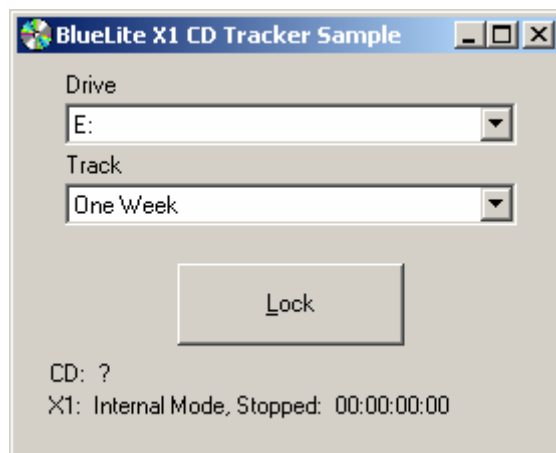
04/25/05

## Introduction

This application allows an audio CD selection to 'Track' the internal clock of the BlueLite X1 Show Control System. It is written in Microsoft's Visual Basic 6.0 and uses the BlueLite X1 Automation API. Documentation for the API along with source code for this application can be downloaded from [www.innovateshowcontrols.com/x1automation](http://www.innovateshowcontrols.com/x1automation).

## Tracker Usage

When the CD Tracker is started, the following screen will appear:

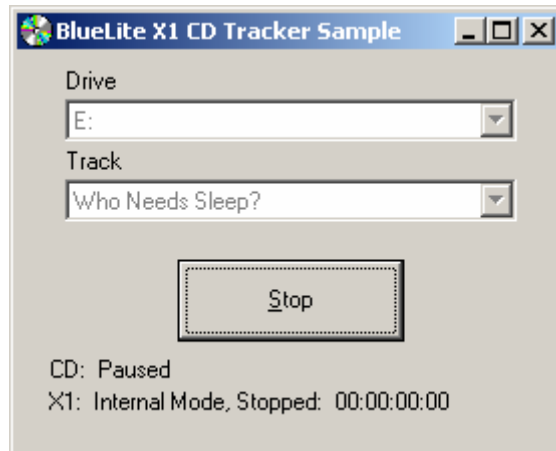


In order to use tracking, the following criteria must be met.

- The BlueLite X1 Application (version 1.1 and above) must be running, and must be in Internal Mode
- Windows Media Player (version 9.0 and above) must be installed
- An audio CD must be present in a CD drive

The Windows Media Player can be downloaded from [www.microsoft.com](http://www.microsoft.com). Once the above requirements are met, a CD drive and audio track should be selected from the two drop down lists. Once a drive and track are selected, the 'Lock' button can be pressed.

Once Locked, the application will select the appropriate CD and track and place the unit in Pause mode:



At this point, selecting Play or Record on the X1's Event List Window will cause the CD to seek to the equivalent time and begin playing. For example, starting at an X1 time of 00:00:00:00 will begin playing the track from its start. An X1 time of 00:00:30:00 will start the CD 30 seconds into the track, and etc.

**Important Note:** Many CD players are significantly off speed when they play. That is, if you play a track from 00:00 to 05:30, exactly five minutes and thirty seconds may not elapse on a clock or stop watch. If you are using such a player with this application, some error may occur when you begin playing the X1 at times other than 00:00:00:00.

## Additional Support

In addition to the documentation and source code available at [www.innovateshowcontrols.com/x1automation](http://www.innovateshowcontrols.com/x1automation), support for the BlueLite X1 Automation API is also available via the Innovate Show Controls online forum. This site (<http://www.innovateshowcontrols.com/forum/>) is an excellent way to directly interact with Innovate Show Controls engineers and staff.