

BlueLite X1 Midi Trigger Sample

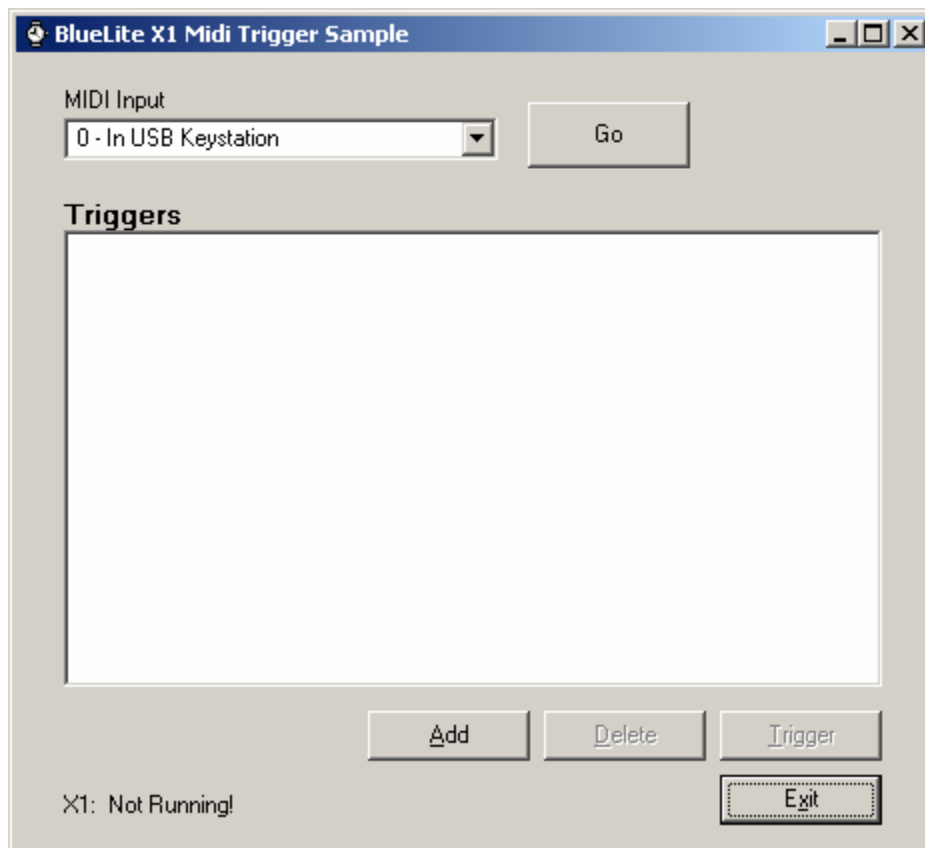
03/20/05

Introduction

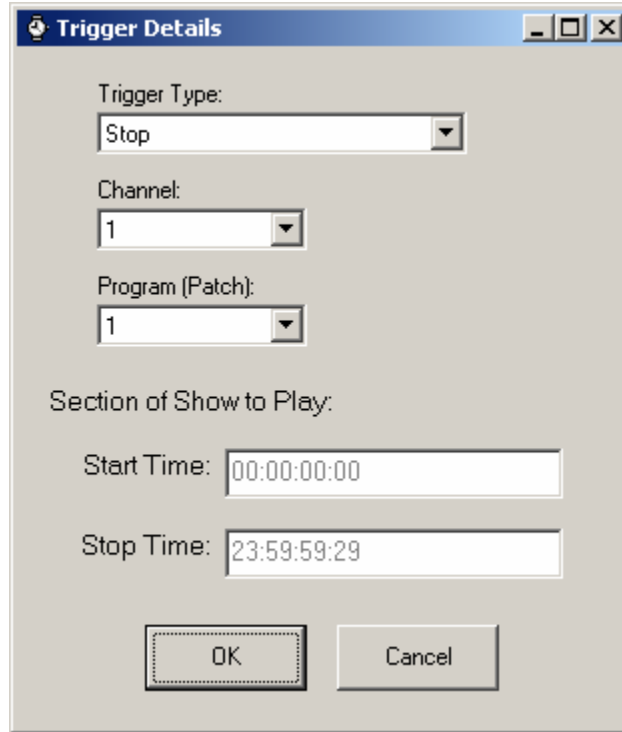
This application is a simple MIDI Program (patch) Change to Event List Trigger for the BlueLite X1 Show Control System. It is written in Microsoft's Visual Basic 6.0 and uses the BlueLite X1 Automation API. Documentation for the API along with source code for this application can be downloaded from www.innovateshowcontrols.com/x1automation.

Midi Trigger Usage

The BlueLite X1 Application (version 1.1 and above) must be running for this application to operate correctly. Once started, the application will look for installed MIDI In ports on your computer. If no MIDI In port is available, the program will issue an error and exit. If at least one MIDI Input is available, the following screen will appear:



Selecting the Add button allows a new trigger to be added to the list:



Trigger Details

Trigger Type:
Stop

Channel:
1

Program (Patch):
1

Section of Show to Play:

Start Time: 00:00:00:00

Stop Time: 23:59:59:29

OK Cancel

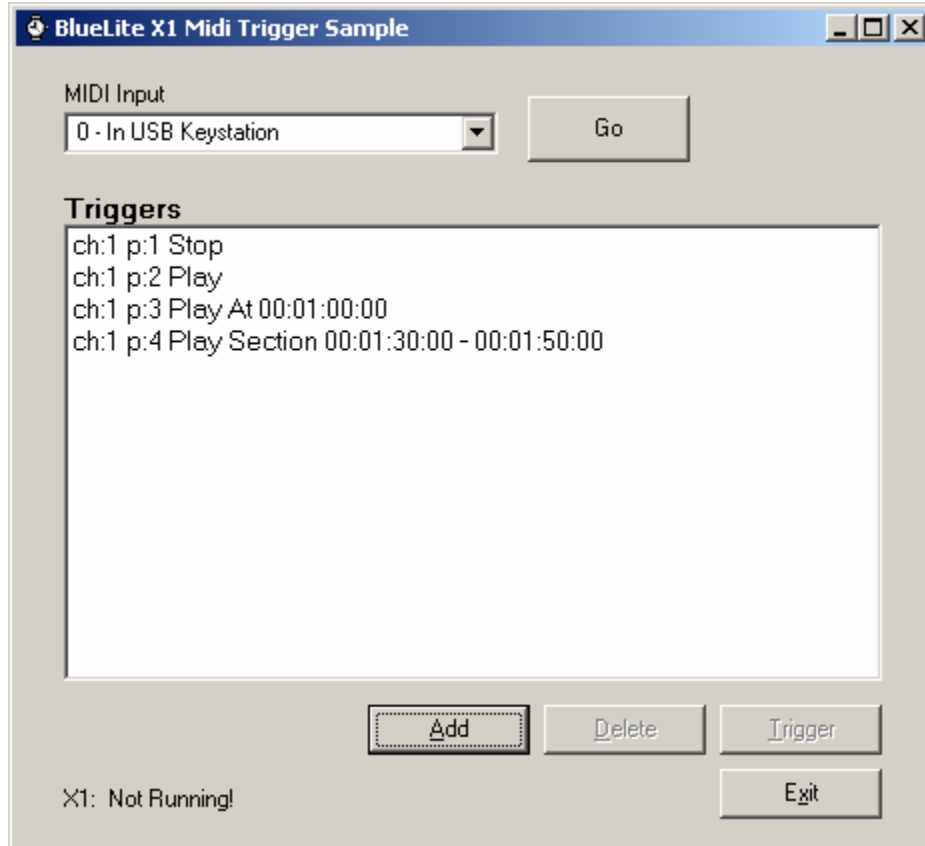
A trigger can:

- Stop** Stop the X1 Event List
- Play** Play the X1 Event List
- Play At** Play the X1 Event List at a specific time
- Play Section** Play a specified section of the X1 Event List

All Triggers are associated with a specific MIDI Channel and MIDI Program (Patch) value.

If the selected trigger type requires a start or stop time, the time can be entered at the bottom of the dialog.

Once Triggers are entered they will appear in the list on the main screen:



In the example above, all triggers monitor MIDI channel 1. A program change of 1 will stop the list, 2 will play the list, 3 will play the list starting at 00:01:00:00, and 4 will play the list from 00:01:30:00 to 00:01:50:00.

Triggers will not be active until the "Go" button next to the MIDI port is pressed. Once the port is opened, the button will change to "Stop", and can be used to halt triggering.

Additional Support

In addition to the documentation and source code available at www.innovateshowcontrols.com/x1automation, support for the BlueLite X1 Automation API is also available via the Innovate Show Controls online forum. This site (<http://www.innovateshowcontrols.com/forum/>) is an excellent way to directly interact with Innovate Show Controls engineers and staff.